

IMG_4274: Units #33 & #34 - overview of building perimeter



IMG_4275:



IMG_4276:



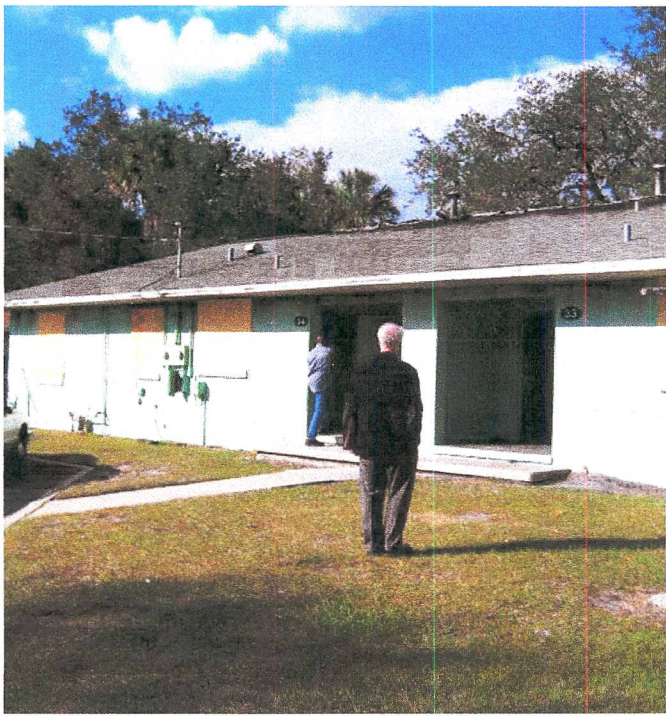
IMG_4277:



IMG_4278: Smoke damage at soffit.



IMG_4279:



IMG_4280:



IMG_4281:



IMG_4282: Fire burn-thru at roof.



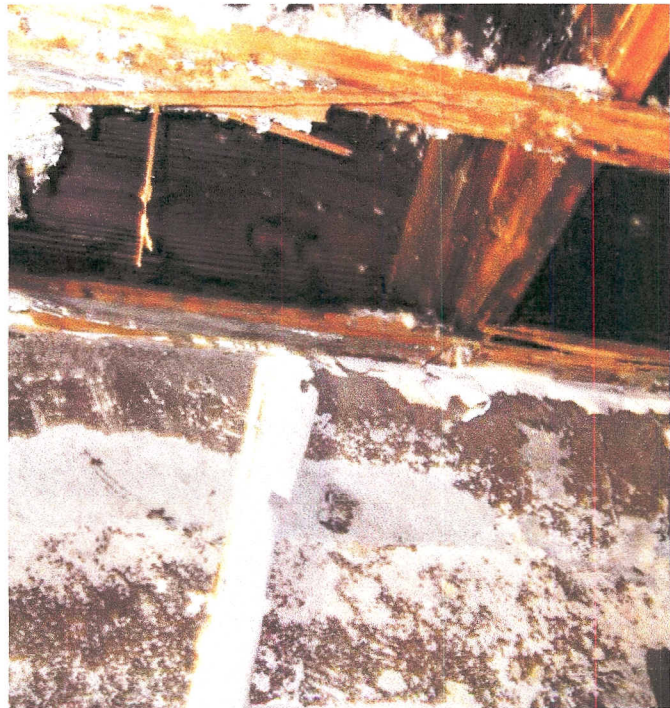
IMG_4283:



IMG_4284: Ceiling framing to bottom of roof trusses. Trusses are badly burned above.



IMG_4285: Truss bearing at perimeter wall.



IMG_4286: Smoke damage at truss bearing wall.



IMG_4287: Trusses and roof deck is severely damaged by fire.



IMG_4288: Severe truss damage.



IMG_4289: Severe truss damage.



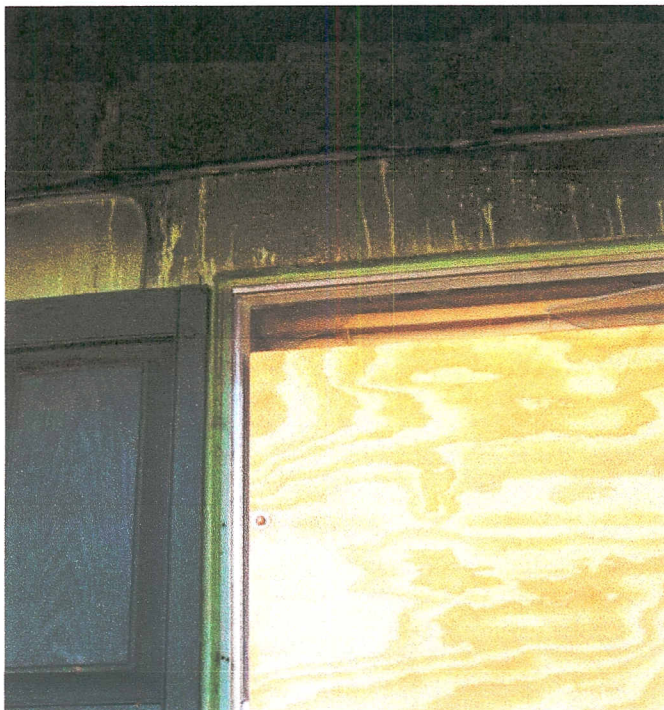
IMG_4290:



IMG_4291: Melted window frame at bottom of lintel.



IMG_4292: Top of window opening.



IMG_4293:



IMG_4294:



IMG_4295: Units #37 & #38



IMG_4296:



IMG_4297:



IMG_4298:



IMG_4299:



IMG_4300: Moderate damage to truss and deck at this location.



IMG_4301:

